

FEEDER BELTING



Coal Feeder Belt

A wide range of fabric reinforced, hot moulded specialty feeder belts used primarily in coal burning applications such as power stations, cogeneration plants, and cement processing.

Integrally manufactured constructions, meet specific conveyor system requirements, focused on reducing spillage and tracking problems, whilst ensuring an extended life span over cold bonded replicas.

Encompassing a custom-made selection of flat, flanged, v-guide, cleated design, or combination make-up, feeder belts.

Features & Benefits

- A bespoke product range particularly suited for coal burning feeder applications
- Separation risk of the profiles from the cover rubber is eliminated by the constructions being integrally hot moulded and vulcanisation during the manufacturing process
- Longer lasting profiles due to elastic rubber compound characteristics for flexibility and fatigue resistance
- Operational performance significantly outlasts replica products made by cold bonded assembly
- Prevents product fines or lumps from edge spillage during belt operation due to notched edge flanges
- Permits smaller pulley diameters in operation as a result of the flanges' notched design
- Feeder maintenance friendly as belts can be easily mechanically fastened
- V-groove guide bottom side tracking strips fit within a pulley face channel to eliminate any risk of tracking issues

Belt Construction

A standard conveyor belt construction comprising of:

- a top and bottom cover interface rubber
- reinforced with a textile fabric carcass of one or more plies to provide the tensile strength
- interply rubber skim coats for ply adhesions
- notched flanges along each belt edge
- v-groove guides hot vulcanised to the return side cover to facilitate belt centralisation

1. V-Groove Guide

2. Edge Flange



Quality & Standards

Double Arrow's range is manufactured at our ISO 9001 accredited production facilities in compliance to the relevant technical standards and specification requirements.

All products are strictly quality controlled through the manufacturing process, and upon completion, fully tested at our on-site laboratory according to the internationally recognised test methods such as AS1334, AS1683, ISO, DIN, ASTM, and other.

Double Arrow Feeder belting conforms to and exceeds:

- Australian Standard 1332
- Other on case by case

Range & Capabilities

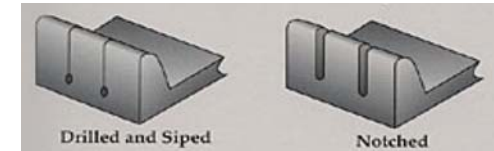
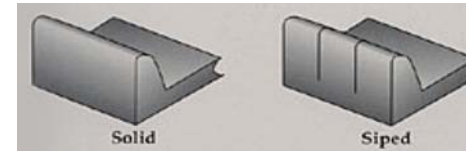
Double Arrow offers a bespoke range of feeder belting suitable primarily for coal burning unit applications in industry.

Standard belt widths of 835mm, 965mm and 1165mm

Belt configurations include flat top with bottom v-guide, top edge flanges with flat bottom, and top with edge flanges and bottom with v-guide.

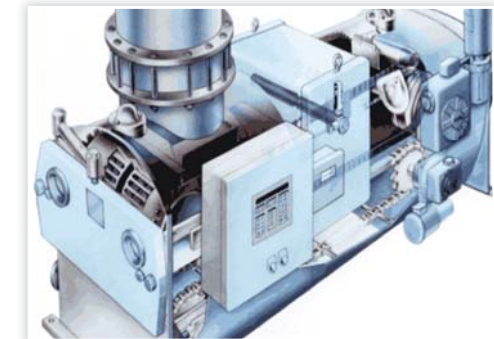
Strategically located feeder belt stock in certain specifications is available.

Typical Belt Designs and Cross Sections



Cover Compounds

Rubber Cover Grade	Minimum Tensile Strength (MPa)	Minimum Elongation at break (%)	Maximum Abrasion loss (mm ³)
AS-N	17	400	200
AS-E	14	300	250
FR-A	12	400	300
MOR	14	400	250
HR120	14	600	200



NOTES: Our "TYPICAL" cover compound properties well surpass the specification requirements ~ further information is available on request. Special compound blends are available to suit application demands.

Feeder belts for diversified materials handling industries:

- Coal Fired Power Plants
- Utilities Producers
- Quarries and Sandpits
- Agricultural Industry
- Cogeneration Plants
- Cement Works
- Surface Mine Operations
- Paper Processing
- Recycling Plants
- Hard Rock Processing
- Iron and Steel Industry
- Timber and Woodchip

